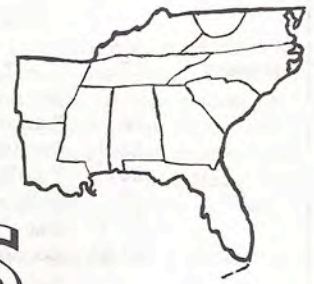




# THE SOUTHERN CROSS



Official Publication of the Southern Division  
National Ski Patrol System, Inc.  
450 S. Chamberlain Ave. o Rockwood, TN 37854

Division Director: C. Harwell Dabbs, M.D.

Editor: Bobbie Rupp

Volume X, Number 1

January 1981

## HARWELL'S HOT LINE

### HAPPY NEW YEAR

1981 is here and I want to wish each of you a happy, and successful year for yourself, your patrol and you family!

### ELECTION TIME

1981 also brings the election of a new Division Director for the Southern Division. When I accepted this responsibility I told myself, and others, that it would be for one term, and that term is almost over. It has been a challenging experience for me, but a rewarding one. Together we have accomplished a great deal.

### LOOKING BACK

During the campaign and on being elected I pledged to "make the system work" and I believe it is. Communication — through the *Southern Cross*, periodic Division POB's, memos, and more frequent (four a year) Executive Committee meetings — has helped to solve problems before they grow, and bring better understanding. The Bylaws have been clarified, updated, and rewritten. A policy and procedure book was conceived, gestated and is now ready for parturition and distribution.

The Fall Officers' Meeting has been streamlined and a new format adopted with workshops for cross fertilization of ideas. The Annual Spring Meeting has continued to grow in number of attendees and enthusiasm. Each one seems to be the "best yet."

The Training and Testing Program continues to mature, at the patrol, section and division levels.

Our Area Management Liaison Program continues to flourish with Southern Division administration officers attending the Spring and Fall Meetings of Southeastern Ski Area Association on a regular basis.

The budding Nordic Program continues its expansion.

The relationship between Professional and Volunteer patrollers has improved division wide, as we continue to bring better understanding to mutual problems.

The Junior Program, and its off-shoot the Explorer Scout Program, constitute a shining monument to the dedication and enthusiasm of the leaders in these programs, and to the Juniors who participate.

Fund Raising is "off and running," building toward what looks like a rosy future.

All-in-all, the Division has accomplished a lot, and is in good shape. I have deliberately refrained from naming any names because so many of you have helped so much and I thank all of you, from the bottom of my heart.

### THE NATIONAL SCENE

As *your* representative in the national organization I have used what powers I had (one vote, one agile mind, one sense of humor, one glib tongue . . . . modest, huh?) to influence the National Board of Directors in the direction I felt we (NSPS) should go. I was very pleased at the annual meeting in June 1980 that some long delayed major decisions were made: the decision to acquire an in-house computer; the decision to hire a full-time national Executive Director. I was also pleased to accept, on your behalf, two gold and one silver merit stars for Southern Division (Outstanding Professional, Outstanding Junior and runner-up Administrative) attesting to the excellence of those programs.

### LOOKING AHEAD

Before we break an arm patting ourselves on the back, let me hasten to add this. Old problems still exist; new challenges will arise. I have dedicated myself to accomplishing those things I pledged you that I would do. It is time for new leadership. We have a tremendous team here in the Southern Division. I am constantly amazed at the abundance of talented, dedicated individuals amongst "our brethren." Let us preserve the best of what we have and go forth to build an even better division to serve the skiing public in the finest tradition of the NSPS.



Harwell Dabbs, M.D., D.D.

## NEWS ITEM

### ELECTION OF DIVISION DIRECTOR

NSPS national By-Laws require that the election of Division Director is conducted by the national office since the Division Director is a voting member of the National Board of Directors. Ski Patrol Directors, Section Chiefs, Regional Directors and the incumbent Divisional Director each have one vote.

A nominating committee, appointed by the Division Director, has the responsibility of screening the nominees to certify their qualifications to the national office. Qualifications for Division Director are defined in The Ski Patroller's Manual (305.3, p. 22).

Randy Pugh is chairman of the nominating committee. All nominations (including self nominations) should be sent to him immediately, together with the resume of the candidate's qualifications.

Randy Pugh  
957 Earl of Essex Arch  
Virginia Beach, VA 23454  
Phones: (804) 481-6503 (H)  
428-8000 (O)

### NATIONAL INSTRUCTOR

Ron Geist, Avalanche Advisor, received an early Christmas present from Denver. In a letter dated December 12, 1980, Bill Hotchkiss, National Avalanche Advisor, notified Ron of his appointment as National Avalanche Instructor No. 306. That means Southern Division now has two — Dale Johnson attained his in 1978. Ron has attended both previous Patch Courses in Montana, and in 1979, participated as one of the instructors at the U. S. Forest Service National Avalanche School in Reno.

Benning Garrison  
PR Advisor

### NEW PATROLLERS IN BLUE RIDGE REGION

Nine patrollers representing five different patrols passed a rainy day exam at Appalachian Ski Mountain on December 28, 1980. The new Basic patrollers are: Douglas Gilstrap, Mill Ridge; March Kirkmyer and Jim Gayle, Beech Mtn.; Steve Brown, Hound Ears; Bill Wellborn and Ed Guzowski, Appalachian; and Chuck Surber, Seven Devils. Lynn Lowry is the new Junior from Beech Mtn., and Cynthia Bolton is an Auxiliary from Hound Ears.

The weather did not dampen the spirits of the new patrollers as they performed skiing and toboggan skills after completing the First Aid, Administrative and History tests. The examiners were Charles Benbow, Steve Benbow, Blake Brown, Sam Bruce and Sherry Perry.

Congratulations to our new patrollers, proving once again that the Southern Division patrols in every weather condition known to man.

Sam Bruce  
Section Chief

### CIRCLE M COURSE HELD AT BEECH MOUNTAIN

Late last Saturday night, after skiing at a temperature of 5°, five figures stole off the top of a Beech Mtn. ski slope into the trees. Just routine, a Circle M Course without tents in the snow. The hearty souls, all Beech Mtn. patrollers are: Kitty Calhoun, J. W. Eades, Rodney Farris, Curley Lathrop, and instructor John Lawrence. Later that night, after night skiing, they were joined by Bill Hanner, March Kirkmyer and Sam. Not only did all survive, but everybody had a comfortable night.

John Lawrence

## CALENDAR

January	17	T & T, Patrol Trainer Clinic, Wintergreen
	18	Senior First Aid Test, Wintergreen
	23-24	Certified Test
	24	T & T, Patrol Trainer Clinic, Sugar Mtn.
	25	Senior First Aid Test, Sugar Mtn.
	24-25	Basic Test, Wintergreen
	24-25	Nordic Basic Test, Smoky Mtn. National Park
February	31	T & T, Patrol Trainer Clinic, Cataloochee
	31	Mid-Winter Executive Committee Meeting, Sugar Mtn.
	1	Senior First Aid Test, Cataloochee
	1	Senior On-the-Hill Test, Sugar Mtn.
	1	Deadline for Southern Cross
March	7-8	Mountaineering Patch Course, Mt. Rogers
	14-15	Circle A & M, Wintergreen
	15	Senior On-the-Hill Test, Cataloochee
	21	Basic Test, Wolf Laurel
	21-22	Junior Jamboree, Seven Devils
	22	Senior On-the-Hill Test, Homestead
	1	Basic Test, Gatlinburg
	1-6	Avalanche Patch Course, Bozeman, MT
April	7-8	Circle A & M, Showshoe
	22-27	National Junior Jamboree, Lake Placid, NY
September	25	Spring Convention, Atlanta, GA
	26	Deadline for Southern Cross
September	12	Fall Officers Meeting, Sugar Mtn.

### MID-WINTER EXECUTIVE COMMITTEE MEETING

The meeting will be held on Saturday, January 31st., 12:30 p.m. at Sugar Mtn. There will be a Dutch Lunch. Any and all patrollers are invited to attend.

Harwell Dabbs, DD

### SPRING CONVENTION — APRIL 25TH

Amazin' Atlanta, Up Town — Down South

Spend a long weekend with your family and fellow patrollers at the discriminating Omni International Hotel in Atlanta at drastically reduced rates. Reservation cards will be enclosed in the next issue of the Southern Cross. Plan NOW for an "out-of-sight" weekend of fun and fellowship.

Rick Roberts



WE SUPPORT  
EPSIA

# AVALANCHE

NSPS  
**AVALANCHE PATCH COURSE: March 1-March 4, 1981**  
 Bozeman, Montana

Earn your Avalanche Rocker  
 and ski the  
**COLD SMOKE OF MONTANA**  
 Bridger Bowl — Big Sky

Reserve a place in class by notifying  
 Ron Geist at the address shown below by  
 January 31, 1981.

Ron Geist  
 1605 Damon Court  
 Dunwoody, Georgia 30338  
 (404) 394-1268

## ALL ABOARD

If it's good skiing, good learning and good fun you're looking for, don't miss the Bridger Bowl Express. Our Avalanche Advisor, Ron Geist, has set up this year's Patch Course in Montana the first week in March. If it runs true to form, there will be plenty of snow (hopefully the Cold Smoke Bridger is famous for): the expertise of National Avalanche Advisor Bill Hotchkiss, who will head up the instructors; fantastic skiing in open bowls, hair-raising couloirs, trails, glades, you name it; the skrunch of 20 people fitting into a nine-passenger van; a few lessons in motel climbing (!), and a graduation party up on the ridge line, complete with cheese and wine. Ron promises a vintage bottle or so of Annie Greensprings (!?!), and *that* you don't want to miss, so sign up today!

Benning Garrison  
 PR Advisor

STOP SKIING  
  
 WHEN TIRED

WARNING!  
  
 SKIING WHEN TIRED MAY BE  
 HARMFUL TO YOUR LEGS AND  
 OTHER MOVING PARTS.



## THE PERSONAL TOUCH

Doug Carlberg, Skyline Regional Director, has come up with a new money making idea he's like to pass along. He says, "We've written all the Tidewater ski clubs, offering talks and shows — the Ski Safety movie — and asking for donations." He feels the talk will be beneficial in getting more money; last year they just wrote letters and did get some donations, but feels this will be better. Doug hopes other regions will want to do this talk/show idea.

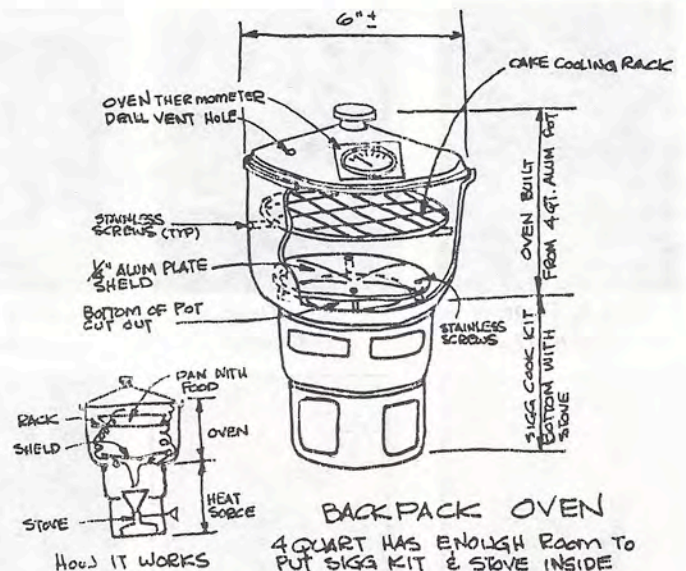
If you want any help in planning a talk/show in your area, please feel free to call me.

Benning Garrison  
 PR Advisor

## RACoon MT. ALPINE SLIDE IN CHATTANOOGA, TENN.

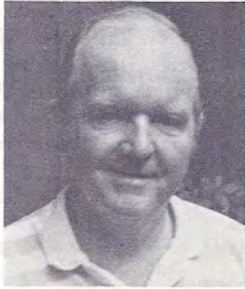
The day of *The Great Mellow Yellow Balloon Race* approximately 7 to 10 thousand people attended the event. The area's recreational facilities were all open including the alpine slide and the chairlift. At about 11:30 a.m. the recreational manager approached the Rescue Squad chief and informed him calmly that the chairlift had broken down and that it was full of people. The rescue chief immediately sent for me, as he knew I was in the National Ski Patrol and had knowledge of this type of rescue. It so happened that I had all of my mountain rescue gear with me. Upon checking with the area, I found they had two Evac chairs, but no one at the resort knew how to use them. I immediately gathered equipment and personnel and went to the first chair finding two ladies very scared and wanting down. With the personnel gathered around, I set up an immediate class in chairlift evacuation. After explaining to the ladies above and to my class below what we were doing, I assigned the jobs to those on the ground. After evacuating the first three chairs very successfully, I split the rescuers into two groups, sending one group to the top of the mountain to work down and I stayed with the group at the bottom to work up. In approximately 1 hour and 45 minutes we successfully evacuated 92 people without any injuries.

Harry "Butch" M. Barnes  
 Cloudmont Resort Ski Patrol

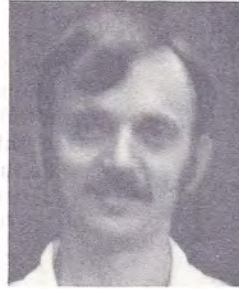


**BACKPACK OVEN**  
 4 QUART HAS ENOUGH ROOM TO  
 PUT SIGG KIT & STOVE INSIDE  
 AND PACK OUT REQUIRES ONLY  
 SLIGHTLY LARGER SPACE AND 8oz  
 IN WEIGHT.

Designed and made by:  
 Lynn Pace  
 Gatlinburg Patrol



*Farris Jackson  
1st ADD*



*Randall N. Avery  
ADD (Line)*



*George T. Moss  
ADD (T & T)*



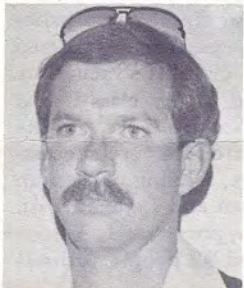
*C. Harwell  
Division*



*Susan Jackson  
Secretary*



*James U  
Trec*



*Sam B. Bruce  
Carolina Highlands SC*



*John Newton  
Cumberland SC*



*Walter Eaton  
Deep South SC*

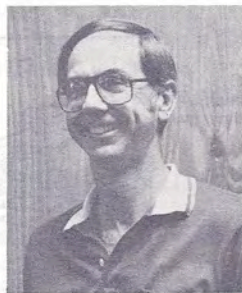


*Tom Fisher  
Grandfather SC*

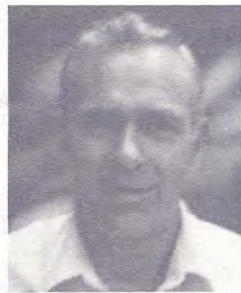
ADV



*Mary K. Twomey  
Auxiliary*



*Ron Geist  
Avalanche*



*Charles T. Benbow, Jr.  
Awards*



*Steve Benbow  
Certified*



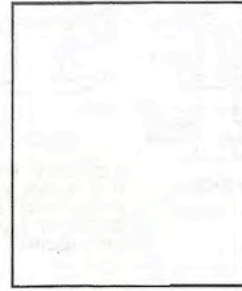
*Patrick D. Barnes  
Computer & Records*



*Farris  
Comm*



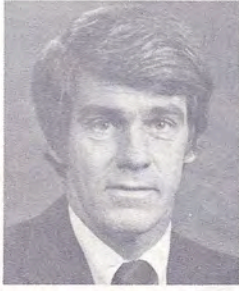
*Patsy Harris  
Historian-Archivist*



*Robert Edwards, Jr.  
Insurance*



*Steve Benbow  
Junior*



*Robert Riddle  
Legal*



*John Lawrence  
Lift Evacuation*



*C. Harwell  
M*



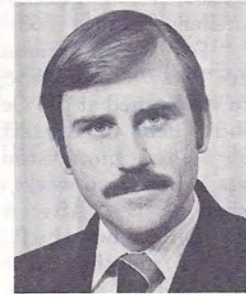
*Dabbs, M. D.  
Director*



*Charles T. Benbow, Jr.  
Blue Ridge RD*



*Janie Bollinger  
Dixie RD*



*Doug Carlberg  
Skyline RD*



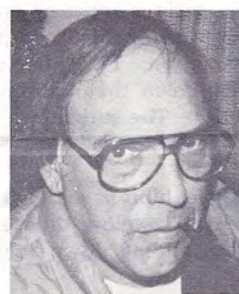
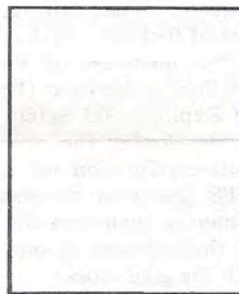
*Sherry Perry  
Pro. Director*



*Thomas F. Godwin  
Smoky Mtn. SC*



*George R. Sanborn  
Southern Virginia SC*



*Randy Pugh  
Virginia SC*



*Robert Bodamer  
W. Virginia/Kentucky SC*



*Bobbie Rupp  
Editor, Southern Cross*



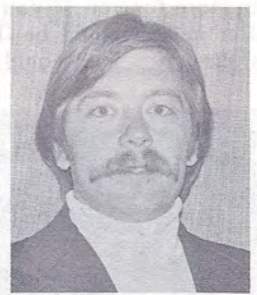
*Keith Gray  
Equipment*



*Norris Woody  
Explorer Scout*



*French Moore, Jr.  
First Aid*



*Mike Harris  
Fund Raising*



*Dabbs, M.D.  
dical*



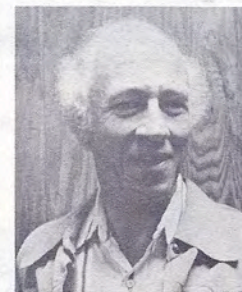
*Charles T. Benbow, III  
Mountaineering*



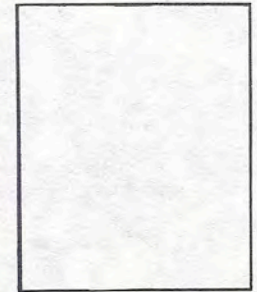
*Lynn Pace  
Nordic*



*Benning Garrison  
Public Relations*



*Walter Eaton  
Safety*



*Dale Johnson  
Search & Rescue*



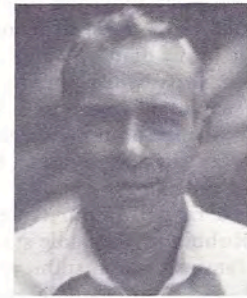
Ed N. Avery  
ADD (Line)



George T. Moss  
ADD (T & T)



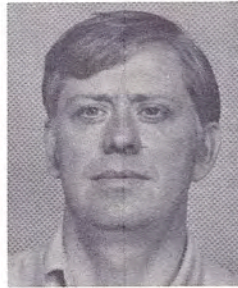
C. Harwell Dabbs, M. D.  
Division Director



Charles T. Benbow, Jr.  
Blue Ridge RD



Susan Jackson  
Secretary



James Underwood  
Treasurer



Sherry Perry  
Pro. Director



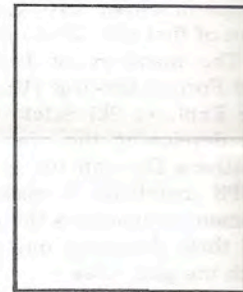
Walter Eaton  
Deep South SC



Tom Fisher  
Grandfather SC



Thomas F. Godwin  
Smoky Mtn. SC



George R. Sanborn  
Southern Virginia SC

ADVISORS



Charles T. Benbow, Jr.  
wards



Steve Benbow  
Certified



Patrick D. Barnes  
Computer & Records



Farris Jackson  
Communication



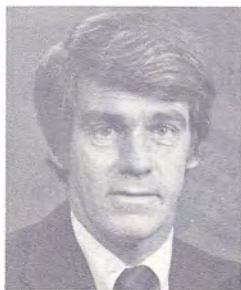
Bobbie Rupp  
Editor, Southern Cross



Keith Gray  
Equipment



Charles T. Benbow, III  
Junior



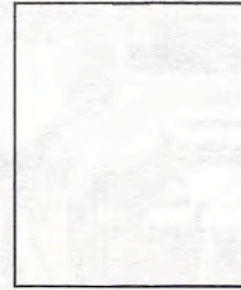
Robert Riddle  
Legal



John Lawrence  
Lift Evacuation



C. Harwell Dabbs, M.D.  
Medical



Charles T. Benbow, III  
Mountaineering



Lynn Pace  
Nordic

## BLUE RIBBON POST

"It's blue! It's blue!" were the excited shouts. Blue was the color of the proficiency award collected by Explorer Ski Safety Post 713. For the uninitiated, blue is the highest color you can receive as a proficiency award in the Scout world. This award was earned at the General Greene Council's Annual Scout Show held in Greensboro, North Carolina.

What makes this an even more astounding accomplishment is that the Post was hardly nine weeks old and was competing with well-established posts. After a couple hours, those participating in the exhibit knew the Post was destined for the heavy hardware because from the start the display and activities created the largest crowds of observers. Never being without spectators, the exhibit was constantly under the watchful eye of one of the judges.

The exhibit not only promoted the Post, but it told the story of the National Ski Patrol and the Southern Division in audiovisuals and one-on-one chats with the questioning crowds.

The exhibit demonstrated skiing, first aid, and mountain rescue equipment. One of the displays showed the development of skis, boots, and bindings, ranging from today back over the past forty years. Another display consisted of proper inner and outer wear for winter weather. Numerous charts used for training in the Advanced First Aid and Emergency Care Course were spread throughout the exhibit. Twenty-plus manuals and reference books used by the Post were displayed next to a collection of makeshift and commercial splints.

The ever faithful open fanny pack, various types of fanny packs, large first aid kit and climbing and evacuation equipment displays were the center of attraction. For those who wanted to dream, there was a movie screen that constantly had skiers busting through deep powder. The surprise of the exhibit was the crowds attracted to a viewer covered with X-rays of different fractures.

The sled placed in the middle of the exhibit gave the skiing public a chance to slip between the handles, close their eyes, and picture themselves in a rust parka gliding down the fall line.

If you are ever in the mountains and see a five-foot, two-inch blond-haired girl in her mid-teens rappel down the side of a mountain with utmost confidence, there could be a surprise in store for you, if you asked her where she learned to rappel. Her answer could be the Exhibition Hall at the Greensboro Coliseum. That could well be the answer because the Post

members not only showed what they had learned but helped each other learn new skills right there in front of the world. That takes guts and a little bit of ham.

The favorite of these learn-while-you-do activities was swinging off the top of a Land Cruiser in a Swiss Seat and rappelling to the floor or sitting about eight feet in the air and telling the crowd below what they were doing, how they do it, and of what use it was to a patroller.

Eight people learned to rappel. Four teams are now proficient in the use of the Robbins orthopedic stretcher. Fifteen members can now use a femur traction splint and quick splint. The tally also included scores of people, young and old, becoming more knowledgeable of what the National Ski Patrol does and why they do it.

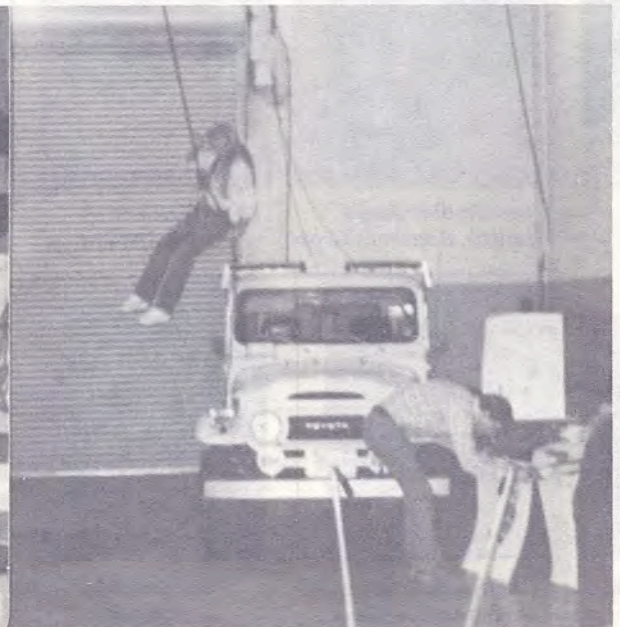
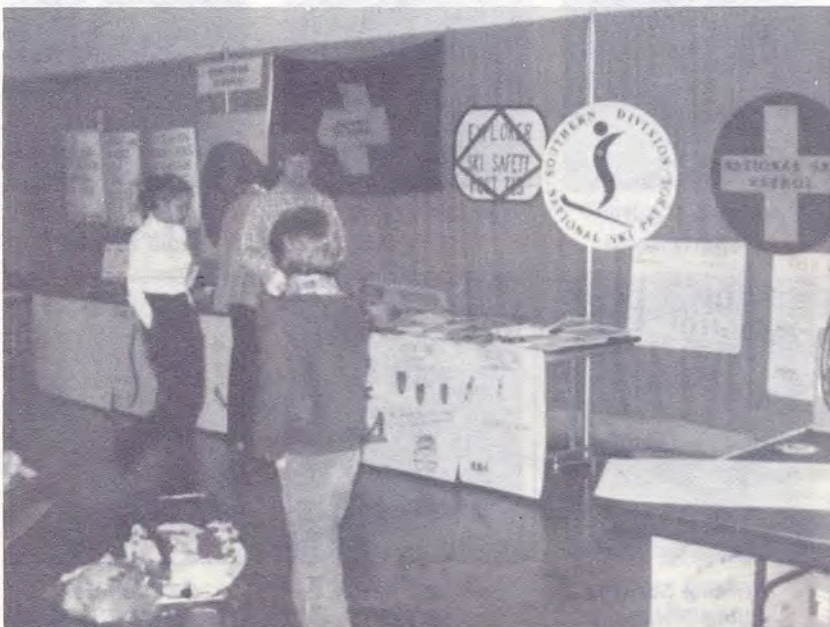
Post 713 started with twenty-two members and has grown at each meeting till the present count is in excess of forty registered members. Their activities have been as varied as the requirements of a ski patroller. The Post has worked on first aid, had a presentation by a ski technician covering all types of equipment, participated in a rappelling clinic, been introduced to the equipment and techniques used in rock face climbing, attended a special class on winter emergencies and hypothermia, and prepared their exhibit for the Scout Show held November 22, 1980.

In the very near future the Post will be working on maintenance of skis and bindings, go on the hill to ski with a patrol, be at a lift evacuation drill, take the Circle A and Circle M courses, get involved in cross-country skiing, participate in a course in winter driving, start climbing rock faces and practice a lot of first aid. That's just for starters.

The members of Post 713 thank Harry Pollard (NSPS) and Forrest McVicar (BSA) for making this program possible, the Explorer Ski Safety Committee of the Southern Division for developing the program, the Blue Ridge Region of the Southern Division for sponsoring the Post. We challenge all NSPS members to make available to the young men and women in their area the opportunity to learn and train to fulfill their dream of one day wearing the coveted rust jacket with the gold cross.

Just drop us a line and we will tell you what it's all about and how to get started.

Norm Stripe  
Asst. Explorer Scout Adv.



## MOUNTAINEERING PATCH COURSE

There will be an Advanced Ski Mountaineering Patch Course February 6 to 8, 1981 at Mount Rogers, Va. The classroom work will be held at the Mount Rogers Rescue and Fire Station on U. S. Route 58 near the White Top, Virginia Post Office. It will begin at 12 Noon on Friday, February 6th. The field work will be Friday night through Sunday afternoon. All participants must pre-register using the form below with a signed recommendation from either your PL or a Division Mountaineering Instructor and mail to F. H. Moore, Jr., Box 516, Abington, Va. 24210 by January 24, 1981. All information needed for the course will then be mailed to you.

This course is open to registered patrollers with Circle M and Circle A, Forest Service and Rescue Squad personnel possessing the basic equipment (cross country skis and/or snow shoes required), knowledge, metal and physical stamina to take part in a survival-type winter weekend. The course is also open to alumni of previous courses. All Southern Division Registered Ski Mountaineering Instructors should make every effort to attend.

### NATIONAL SKI PATROL SYSTEM, SOUTHERN DIVISION APPLICATION FOR ADVANCED SKI MOUNTAINEERING COURSE

Name \_\_\_\_\_ Phone: Home \_\_\_\_\_ Office \_\_\_\_\_  
 Street Address \_\_\_\_\_ City \_\_\_\_\_ State \_\_\_\_\_ Zip \_\_\_\_\_  
 Current NSPS Registration No. \_\_\_\_\_ Patrol \_\_\_\_\_ Region \_\_\_\_\_  
 Circle A Card No. \_\_\_\_\_ Year \_\_\_\_\_ Circle M Card No. \_\_\_\_\_ Year \_\_\_\_\_  
 Division Circle M Instructor No. \_\_\_\_\_ Year \_\_\_\_\_  
 Evidence of winter mountaineering experience *other* than Circle M Course \_\_\_\_\_  
 Other general outdoor and mountaineering experience, including schools, etc. \_\_\_\_\_

**PATROL LEADER'S RECOMMENDATION:** I hereby approve and recommend the above patroller as candidate for the Advanced Ski Mountaineering Course.

Signed \_\_\_\_\_

**DIVISION SKI MOUNTAINEERING INSTRUCTOR RECOMMENDATION:** I hereby approve and recommend the above patroller as candidate for the Advanced Ski Mountaineering Course.

Ski Mountaineering Instructor, Card No. \_\_\_\_\_ Signed \_\_\_\_\_

**NOTE:** Do not recommend any person who in your opinion is not mentally, physically and emotionally capable of participating in a rugged winter expedition. Candidates should also display strong leadership qualities.




*Your Complete Ski Shop  
for Equipment & Apparel*

Full-Time, Certified Ski Mechanic  
Down Hill & Cross Country  
Rentals

765-4587

## SKI & TENNIS STATION

4001 Country Club Road, Winston-Salem, N. C. 27104



### Appalachian Medical Supply Company

*Division of Orthopedic Appliance Company, Inc.*

First Aid Supplies

75 Victoria Road  
Asheville, N. C. 28801  
(704)258-9620



